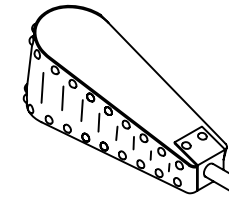
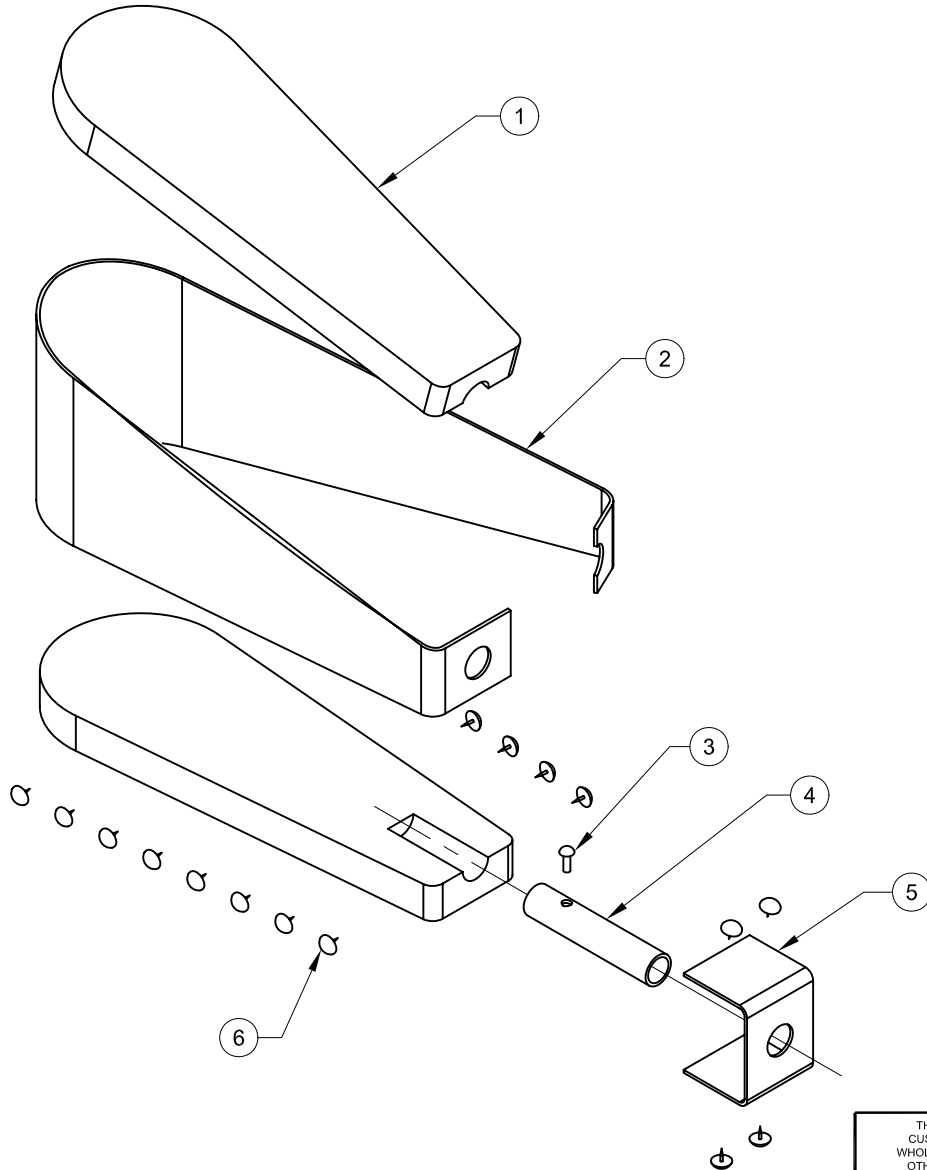


ITEM	QTY	DESCRIPTION	WIDTH	LENGTH	UM	PART NUMBER	MATERIAL	TYP
1	2	BELLOWS, PADDLE			EA		WOOD	D
2	1	BELLOWS, SKIRT			EA		RUBBER	D
3	1	SCREW, ROUND HEAD #6		.5	EA		STEEL	D
4	1	BELLOWS, PIPE			EA		PLASTIC	F
5	1	BELLOWS, NOSE			EA		RUBBER	D
6	50	THUMB TACK			EA		STEEL	P
7	1	COAT HANGER WIRE		4.00	EA		STEEL	P



ASSEMBLED VIEW
(FOR REFERENCE ONLY)

- A FASTEN BELLOWS PIPE (ITEM 4) TO BELLOWS PADDLE (ITEM 1) WITH SCREW. (ITEM 3)
- B FASTEN BELLOWS SKIRT (ITEM 2) TO THE LOWER BELLOWS PADDLE (ITEM 1) WITH THUMB TACKS (ITEM 6). HINT: START AT ONE EDGE WITH ONE TACK. FASTEN ANOTHER TACK ON OPPOSITE SIDE AND ONE ON THE ROUND END. THIS WILL HOLD THE SKIRT IN PLACE AS YOU APPLY THE REMAINING TACKS.
- C FASTEN BELLOWS SKIRT (ITEM 2) TO THE UPPER BELLOWS PADDLE (ITEM 1) WITH THUMB TACKS (ITEM 6).
- D SLIP THE BELLOWS NOSE (ITEM 5) OVER THE BELLOWS PIPE (ITEM 4) AND FASTEN WITH THUMB TACKS (ITEM 6).
- E AFTER THE RACE INSERT THE COAT HANGER WIRE (ITEM 7) INTO THE TOP OF THE BELLOWS. INSERT INTO BOTTOM OF SAILBOAT AND DISPLAY.

THIS DRAWING IS THE PROPERTY THE CUSTOMER. IT SHALL NOT BE COPIED (IN WHOLE OR IN PART), FOR MANUFACTURE OR OTHERWISE DISCLOSED WITHOUT PRIOR WRITTEN CONSENT OF THE CUSTOMER.		TOLERANCES		SCALE: 1:2	TITLE: PACK 409 PROJECT BELLOWS (AIR MACHINE)
		MACHINING	FABRICATION	DRAWN BY:	DATE:
		X. ±.040	ALL ANGULAR ±.06		
		X.X ±.020	2"		
		X.XX ±.010	ALL FINISHES 125mm	CHECKED BY:	
		X.XXX ±.005	DEBURR ALL SHARP	DATE:	
		ANGULAR ± 1/2"	CORNERS OR EDGES	DWG NO: ASSEMBLY	
ESTIMATED WEIGHT:	FIRST ORDERED ON:			SIZE: A	SHEET 1 OF 1