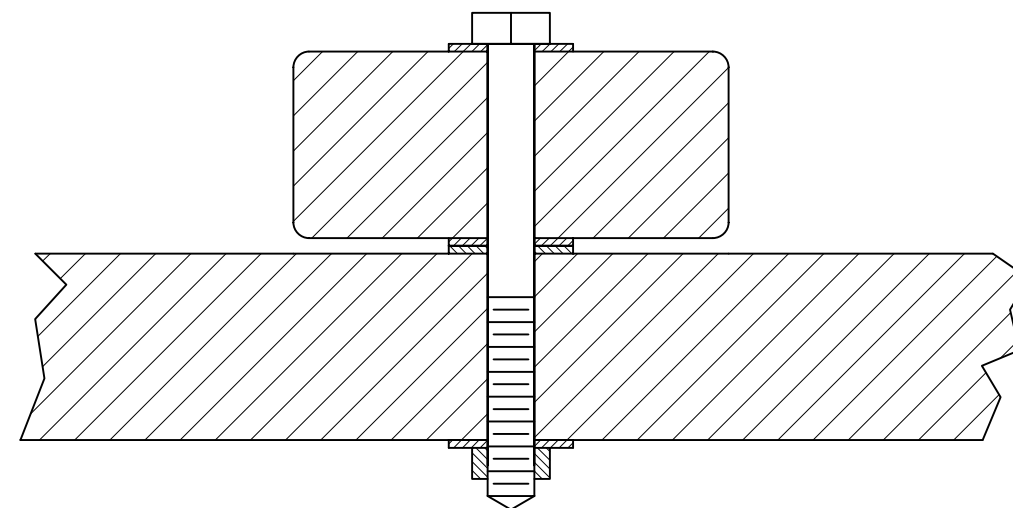
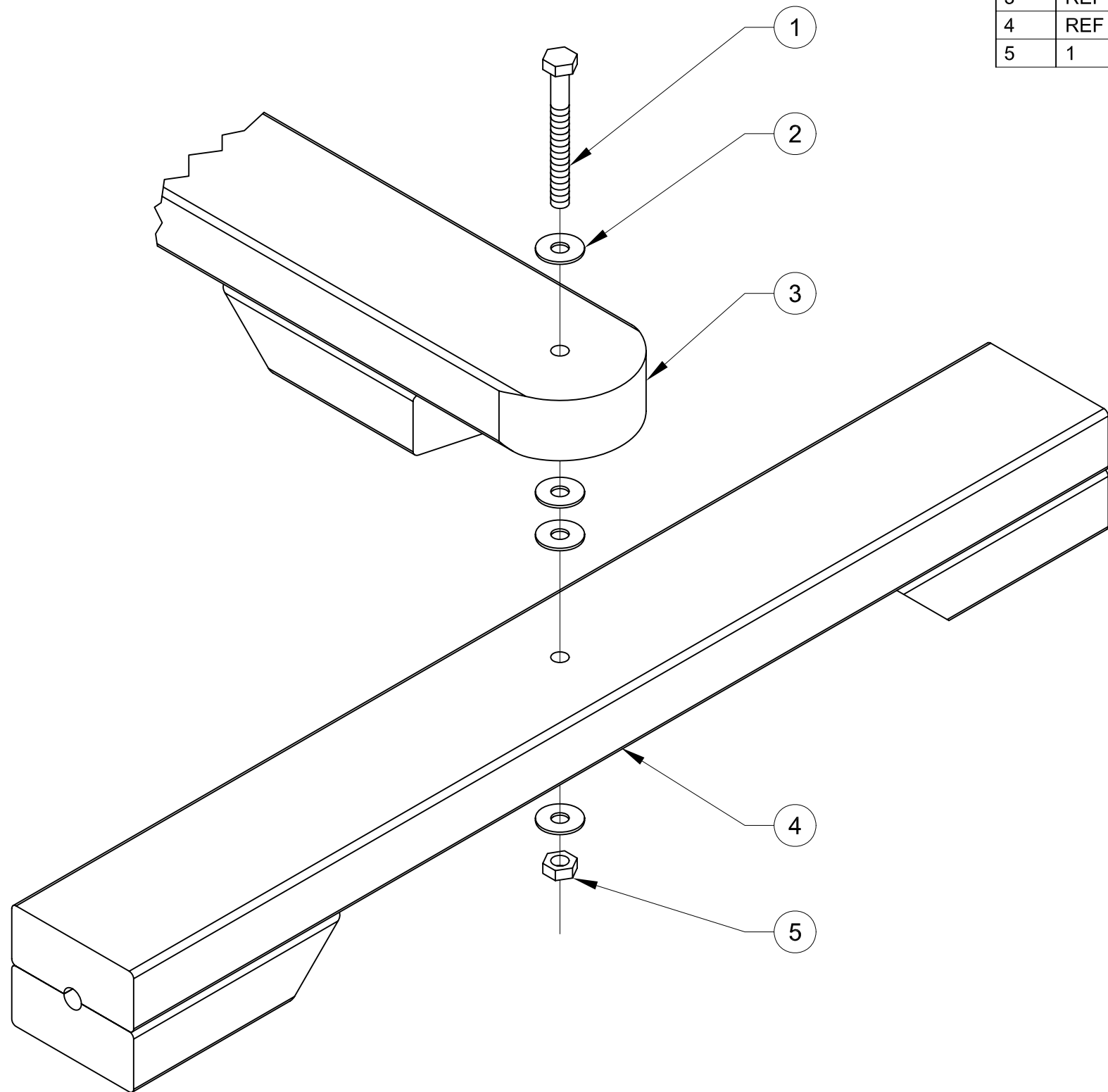


| ITEM | QTY | DESCRIPTION | WIDTH | LENGTH | UM | PART NUMBER | MATERIAL | TYP |
|------|-----|------------------------|-------|--------|----|-------------|----------|-----|
| 1 | 1 | BOLT, 3/8" | | 3.5 | EA | | STEEL | P |
| 2 | 4 | WASHER, FENDER 3/8" | | | EA | | STEEL | P |
| 3 | REF | FRAME, MAIN | | | EA | | | D |
| 4 | REF | AXEL, FRONT | | | EA | | | D |
| 5 | 1 | NUT, SELF LOCKING 3/8" | | | EA | | STEEL | P |



SECTIONED/ASSEMBLED VIEW

A TIGHTEN FRONT AXEL TO SECURE BUT ALLOW IT TO SWING FREELY.

| | | | | | | |
|--|-------------------|------------|-------------|------------------|--|--|
| THIS DRAWING IS THE PROPERTY THE CUSTOMER. IT SHALL NOT BE COPIED (IN WHOLE OR IN PART), FOR MANUFACTURE OR OTHERWISE DISCLOSED WITHOUT PRIOR WRITTEN CONSENT OF THE CUSTOMER. | | TOLERANCES | | SCALE: 1:2 | TITLE: PACK 409 CUB-MOBILE ASSEMBLY, FRONT AXEL | |
| | | MACHINING | FABRICATION | DRAWN BY: MGATES | | |
| ESTIMATED WEIGHT: | FIRST ORDERED ON: | X. | ± .040 | ALL | ± .06 | DATE: 07JAN08 CHECKED BY: DATE: |
| | | X.X | ± .020 | ANGULAR | 2° | |
| | | X.XX | ± .010 | ALL FINISHES | 125mu | |
| | | X.XXX | ± .005 | DEBURR ALL SHARP | CORNERS OR EDGES | |
| | | ANGULAR | ± 1/2° | | | SIZE: A SHEET 1 OF 1 DWG NO: AXEL-1 |