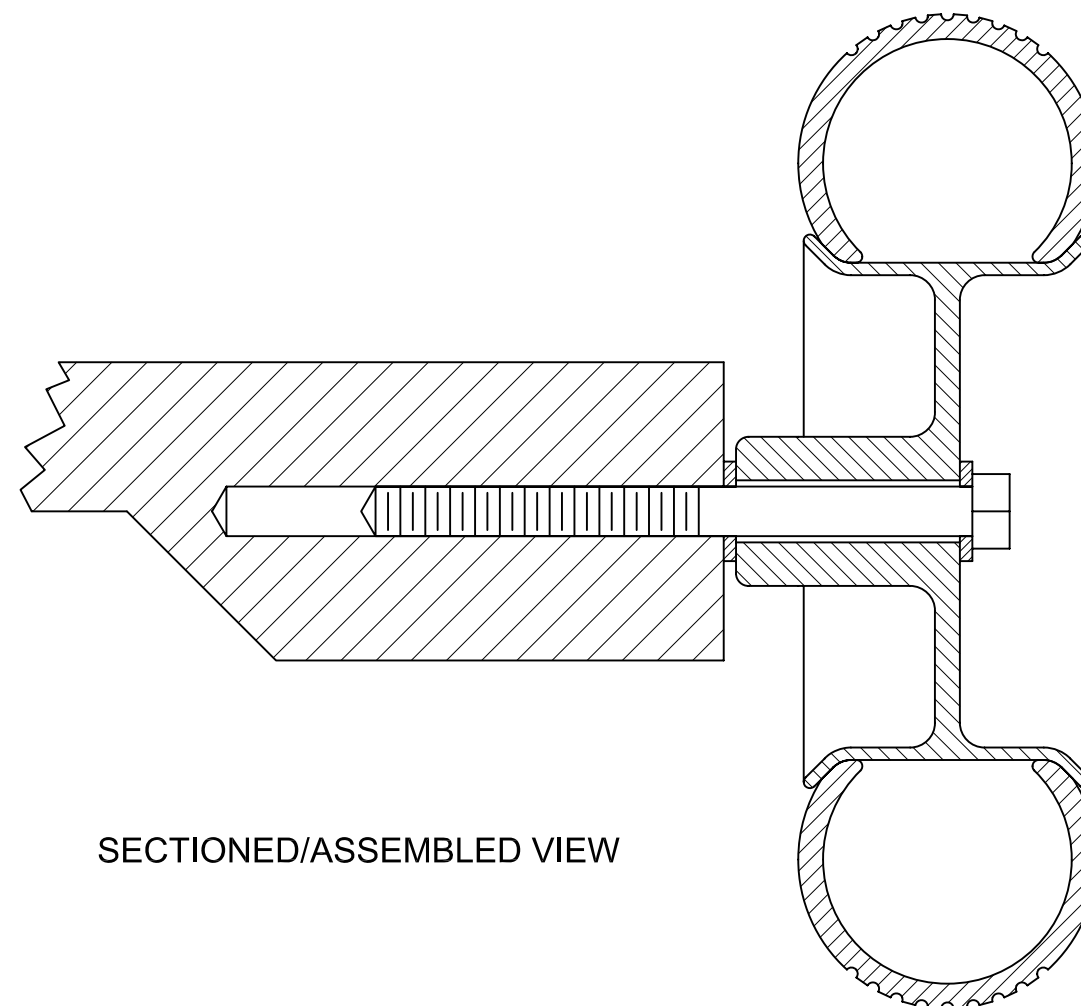
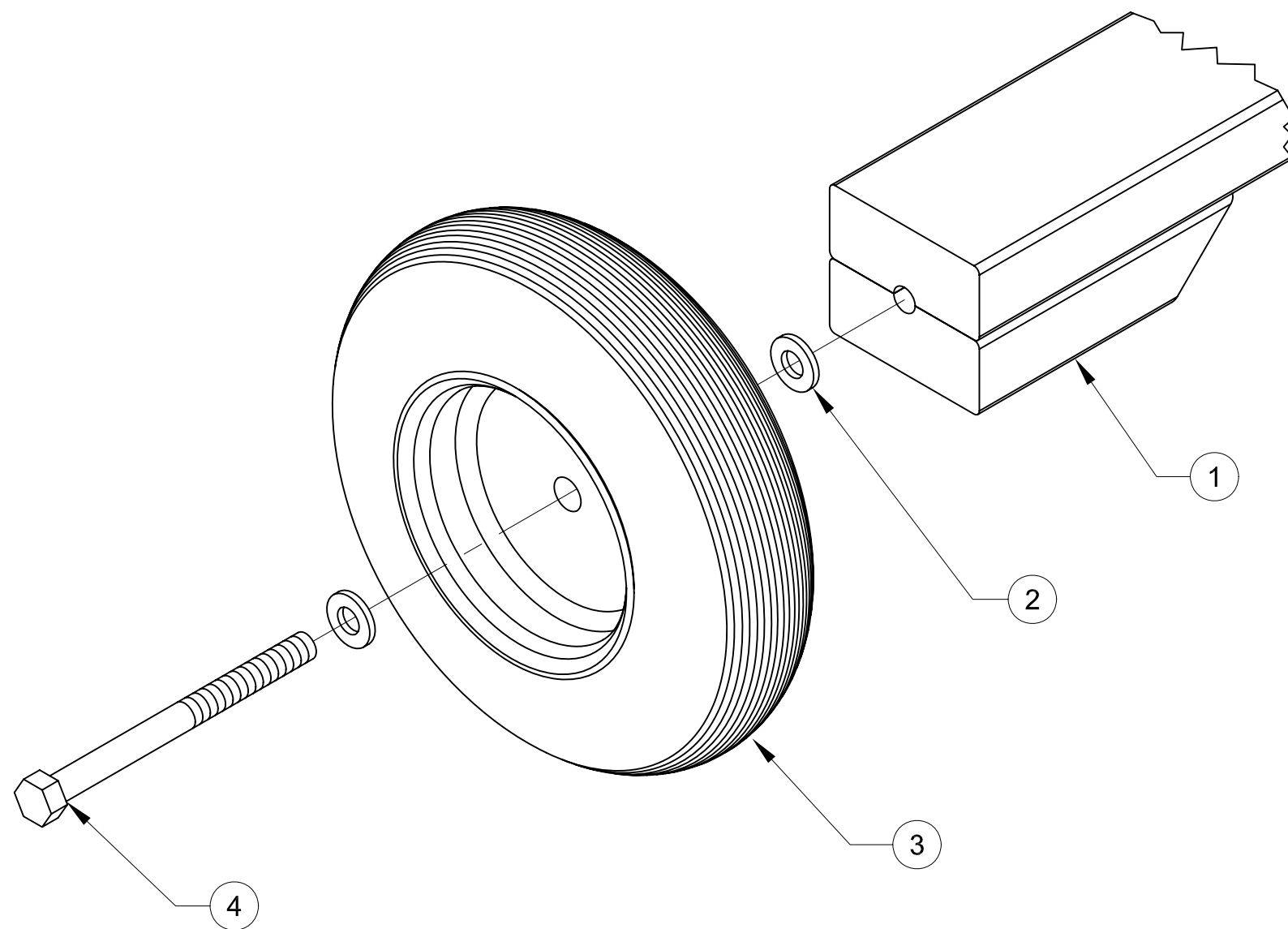


ITEM	QTY	DESCRIPTION	WIDTH	LENGTH	UM	PART NUMBER	MATERIAL	TYP
1	REF	AXEL, FRONT/REAR			EA			D
2	8	WASHER, 1/2"			EA		STEEL	P
3	4	WHEEL/HUB			EA		RUBBER	P
4	4	LAG SCREW 1/2"		8.0	EA		STEEL	P



SECTIONED/ASSEMBLED VIEW

- A** ASSEMBLY TYPICAL ALL 4 CORNERS OF VEHICLE.
- B** WHEEL/HUB IS TYPICALLY 8"-10" DIA, 3" WIDE DOLLY OR CART WHEEL.

THIS DRAWING IS THE PROPERTY THE CUSTOMER. IT SHALL NOT BE COPIED (IN WHOLE OR IN PART), FOR MANUFACTURE OR OTHERWISE DISCLOSED WITHOUT PRIOR WRITTEN CONSENT OF THE CUSTOMER.		TOLERANCES		SCALE: 1:2	TITLE: PACK 409 CUB-MOBILE ASSEMBLY, WHEEL	
		MACHINING	FABRICATION	DRAWN BY: MGATES	REV	
ESTIMATED WEIGHT:	FIRST ORDERED ON:	X.	± .040	ALL	DATE: 07JAN08	SIZE: A SHEET 1 OF 1
		X.X	± .020	ANGULAR	2°	
		X.XX	± .010	ALL FINISHES	125mu	
		X.XXX	± .005	DEBURR ALL SHARP CORNERS OR EDGES		
		ANGULAR	± 1/2°	DATE:	DWG NO: WHEEL-1	