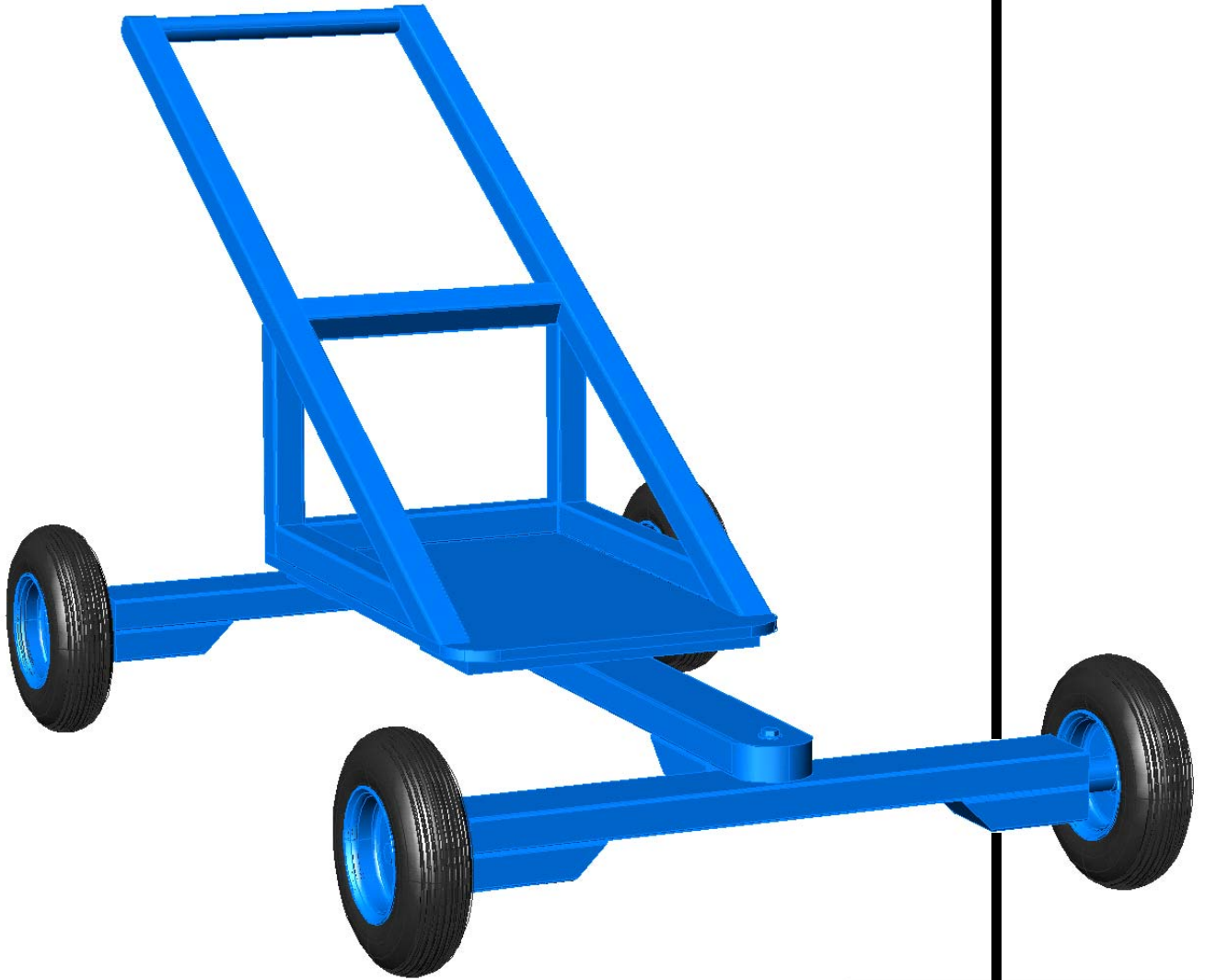
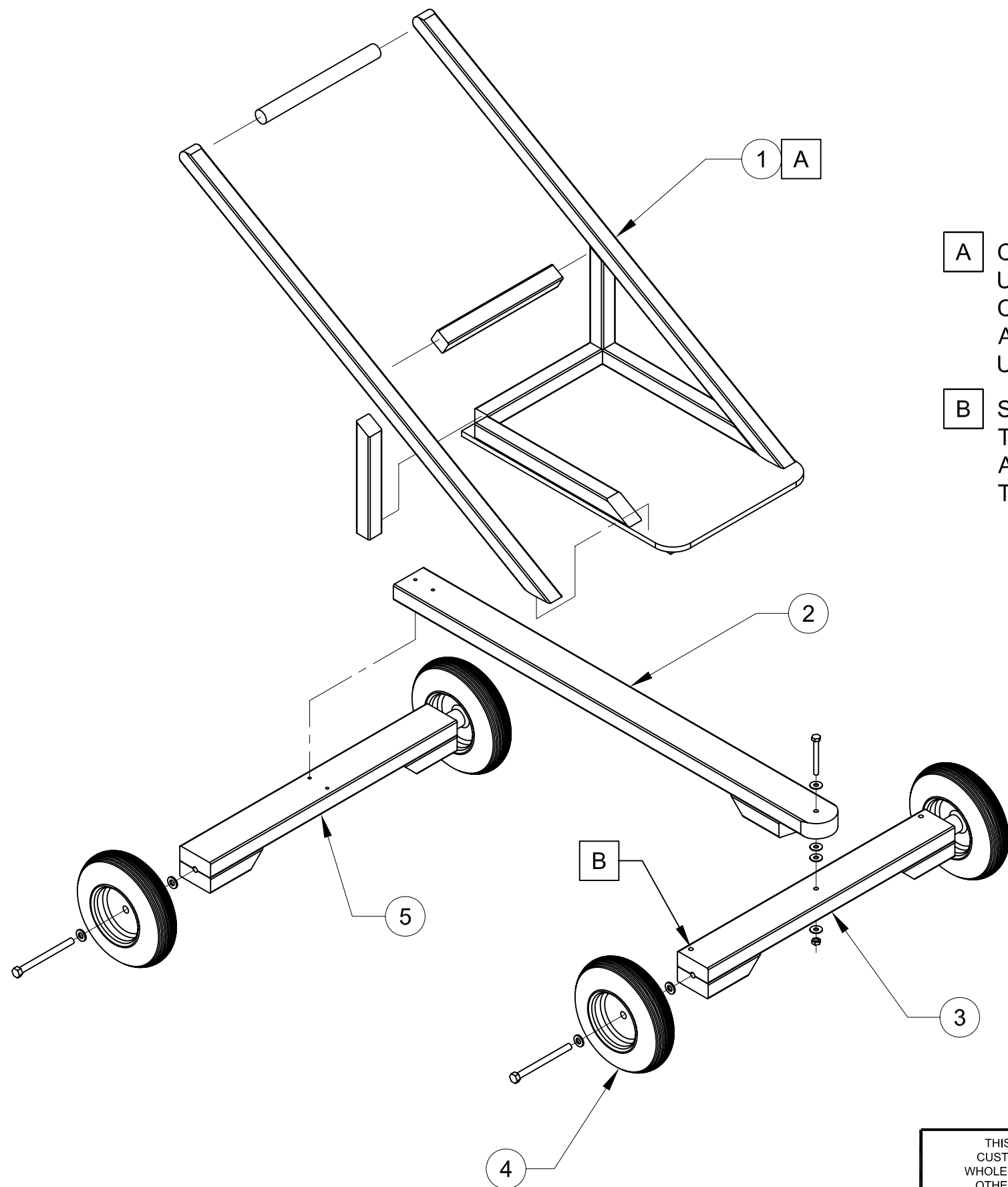


Cub Scout Pack 409

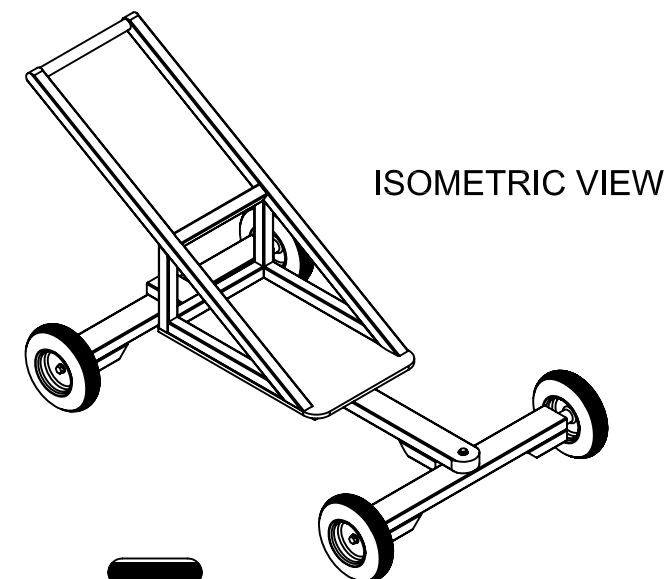


Cub-Mobile Plans

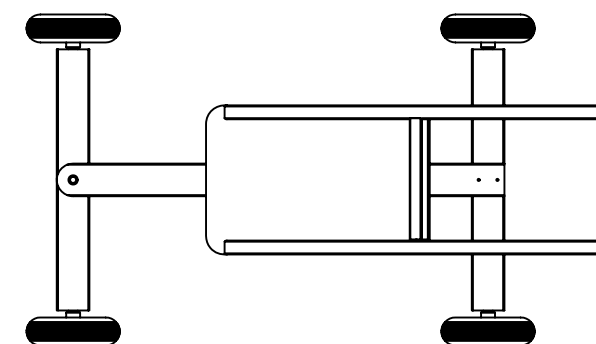
ITEM	QTY	DESCRIPTION	WIDTH	LENGTH	UM	PART NUMBER	MATERIAL	TYP
1	1	ASSEMBLY, COCKPIT			EA	COCKPIT-1		D
2	1	FRAME, MAIN			EA			D
3	1	ASSEMBLY, FRONT AXEL			EA	AXEL-1		D
4	4	ASSEMBLY, WHEEL			EA	WHEEL-1		D
5	1	ASSEMBLY, REAR AXEL			EA	AXEL-2		D
6	1	ROPE, STEERING		48.00	EA		1/4" NYLON	P
7	4	SCREWS, DRYWALL		2.5	EA		STEEL	P
8	REF	PART CUT DRAWING			EA	PARTS-1		D



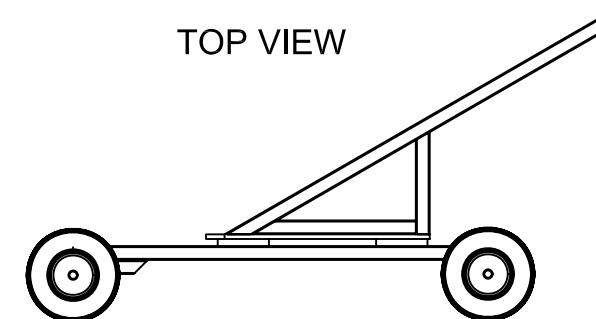
- A** COCKPIT IS TO BE FASTENED TO FRAME USING DRYWALL SCREWS. POSITION THE COCKPIT SO THAT THE SCOUT WILL BE ABLE TO CONTROL THE FRONT AXEL BY USING HIS FEET.
- B** STEERING ROPE IS TO BE THREADED THRU HOLES PROVIDED IN THE FRONT AXEL ASSEMBLY. FASTEN BY KNOTTING THE ENDS.



ISOMETRIC VIEW



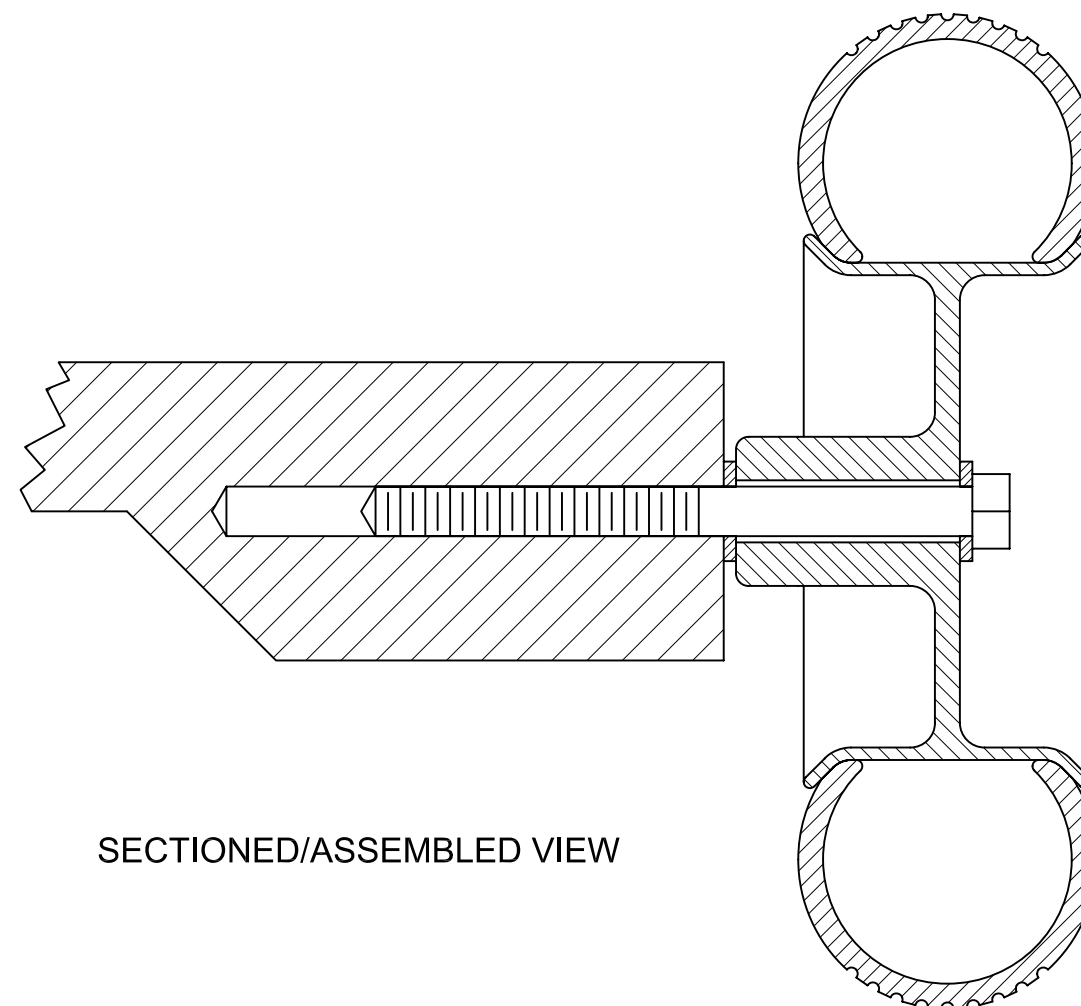
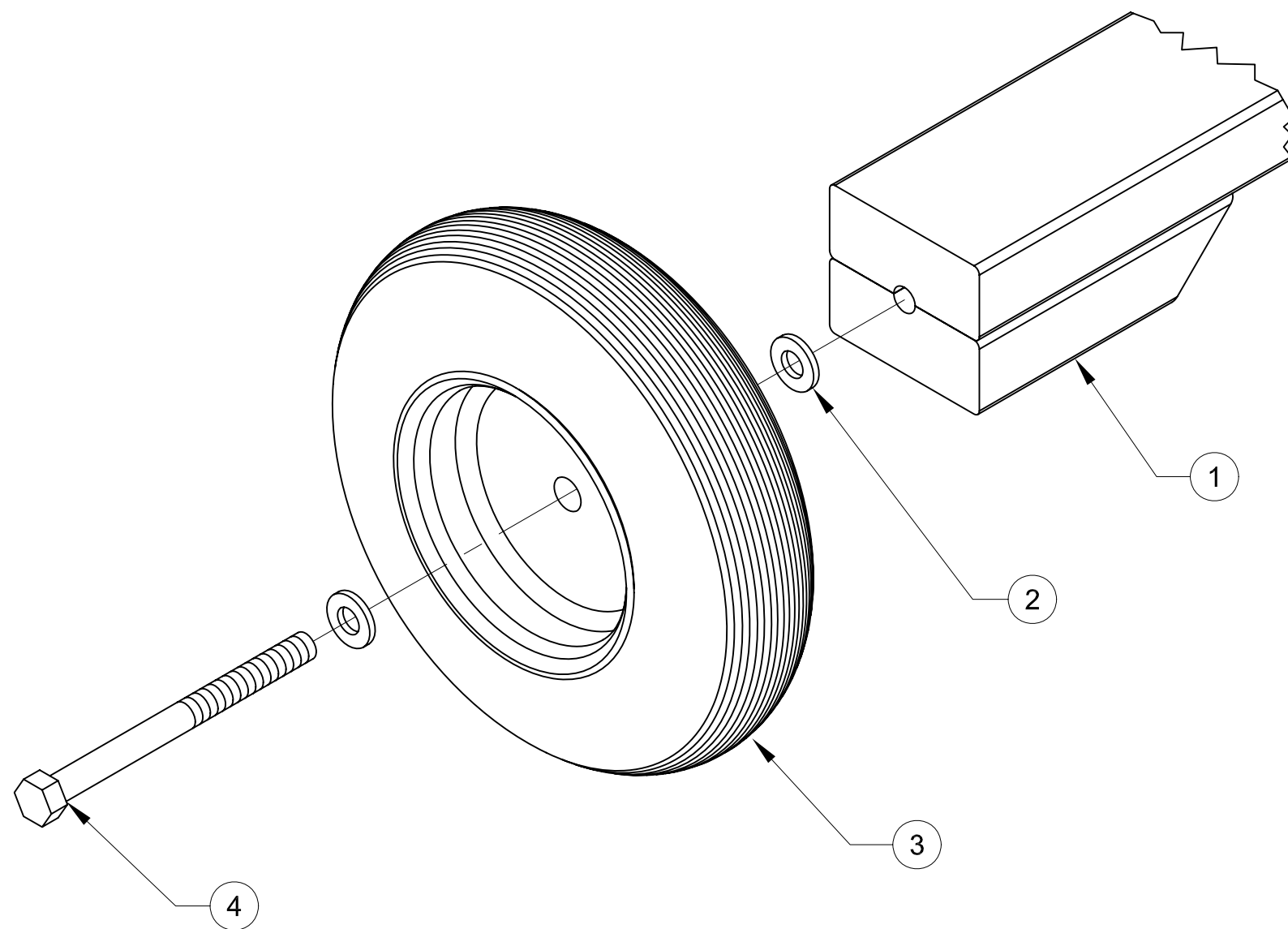
TOP VIEW



SIDE VIEW

THIS DRAWING IS THE PROPERTY THE CUSTOMER. IT SHALL NOT BE COPIED (IN WHOLE OR IN PART), FOR MANUFACTURE OR OTHERWISE DISCLOSED WITHOUT PRIOR WRITTEN CONSENT OF THE CUSTOMER.		TOLERANCES		SCALE: 1:2	TITLE: PACK 409 CUB-MOBILE ASSEMBLY, MAIN	
		MACHINING	FABRICATION	DRAWN BY: MGATES		
ESTIMATED WEIGHT:	FIRST ORDERED ON:	X. ±.040	ALL ANGULAR ±.06 2°	DATE: 07JAN08	SIZE: A	SHEET 1 OF 1
		X.X ±.020	ALL FINISHES 125mu	CHECKED BY:	REV	
		X.XX ±.010	DEBURR ALL SHARP CORNERS OR EDGES	DATE:	DWG NO: ASSEMBLY	
		X.XXX ±.005				
		ANGULAR ± 1/2°				

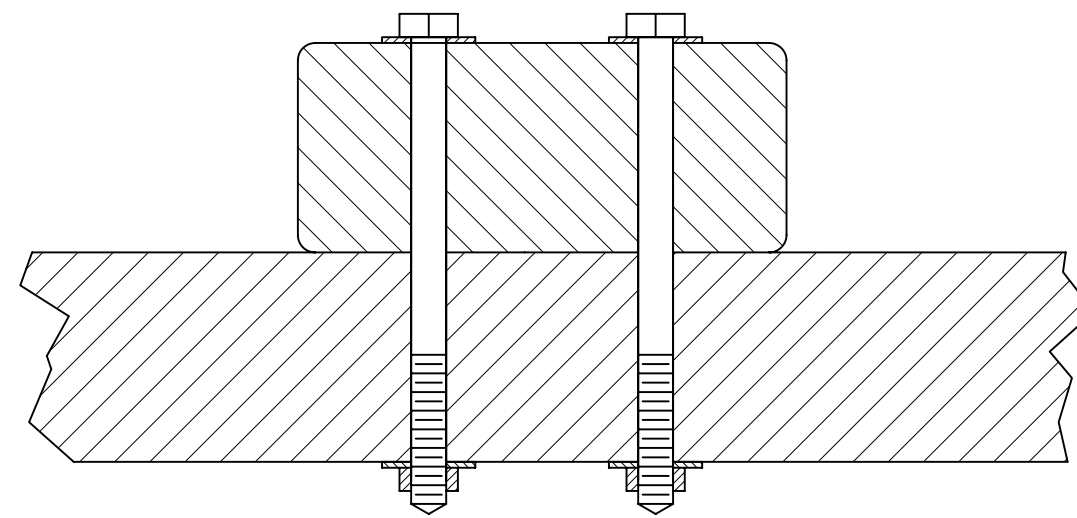
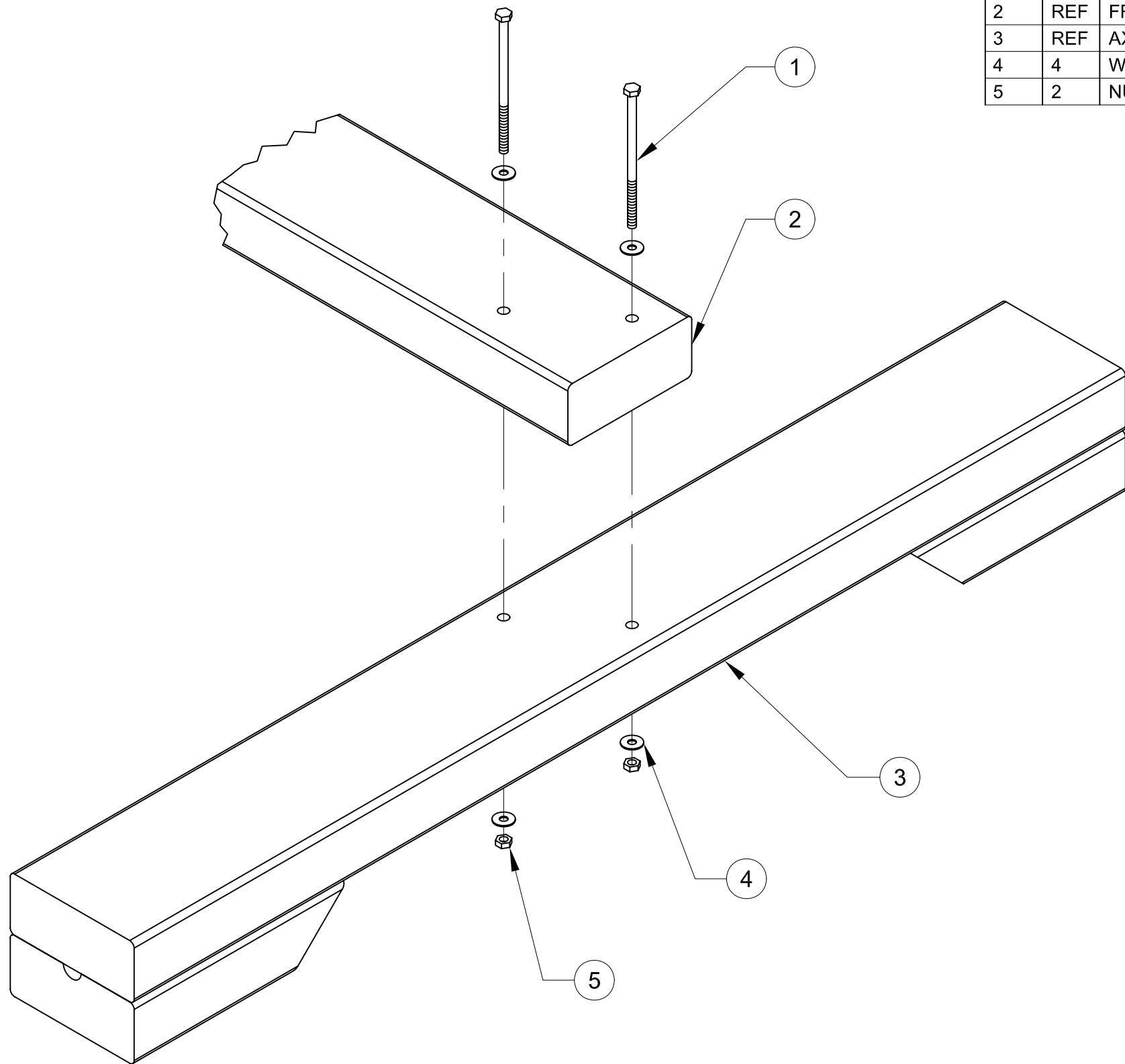
ITEM	QTY	DESCRIPTION	WIDTH	LENGTH	UM	PART NUMBER	MATERIAL	TYP
1	REF	AXEL, FRONT/REAR			EA			D
2	8	WASHER, 1/2"			EA		STEEL	P
3	4	WHEEL/HUB			EA		RUBBER	P
4	4	LAG SCREW 1/2"		8.0	EA		STEEL	P



- A** ASSEMBLY TYPICAL ALL 4 CORNERS OF VEHICLE.
- B** WHEEL/HUB IS TYPICALLY 8"-10" DIA, 3" WIDE DOLLY OR CART WHEEL.

THIS DRAWING IS THE PROPERTY THE CUSTOMER. IT SHALL NOT BE COPIED (IN WHOLE OR IN PART), FOR MANUFACTURE OR OTHERWISE DISCLOSED WITHOUT PRIOR WRITTEN CONSENT OF THE CUSTOMER.		TOLERANCES		SCALE: 1:2	TITLE: PACK 409 CUB-MOBILE ASSEMBLY, WHEEL	
		MACHINING	FABRICATION	DRAWN BY: MGATES		
ESTIMATED WEIGHT:	FIRST ORDERED ON:	X.	± .040	ALL	± .06	DATE: 07JAN08
		X.X	± .020	ANGULAR	2°	CHECKED BY:
		X.XX	± .010	ALL FINISHES	125mu	DATE:
		X.XXX	± .005	DEBURR ALL SHARP CORNERS OR EDGES		
		ANGULAR	± 1/2°			
				SIZE: A	SHEET 1 OF 1	REV
				DWG NO:		WHEEL-1

ITEM	QTY	DESCRIPTION	WIDTH	LENGTH	UM	PART NUMBER	MATERIAL	TYP
1	2	BOLT, 1/4"		3.50	EA		STEEL	P
2	REF	FRAME, MAIN			EA			D
3	REF	AXEL, REAR			EA			D
4	4	WASHER, FLAT 1/4"			EA		STEEL	P
5	2	NUT, 1/4"			EA		STEEL	P



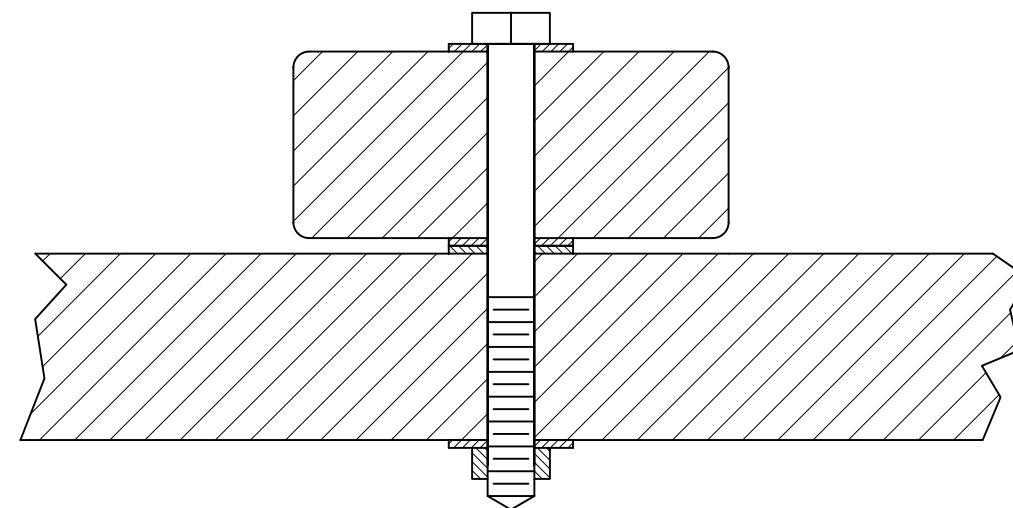
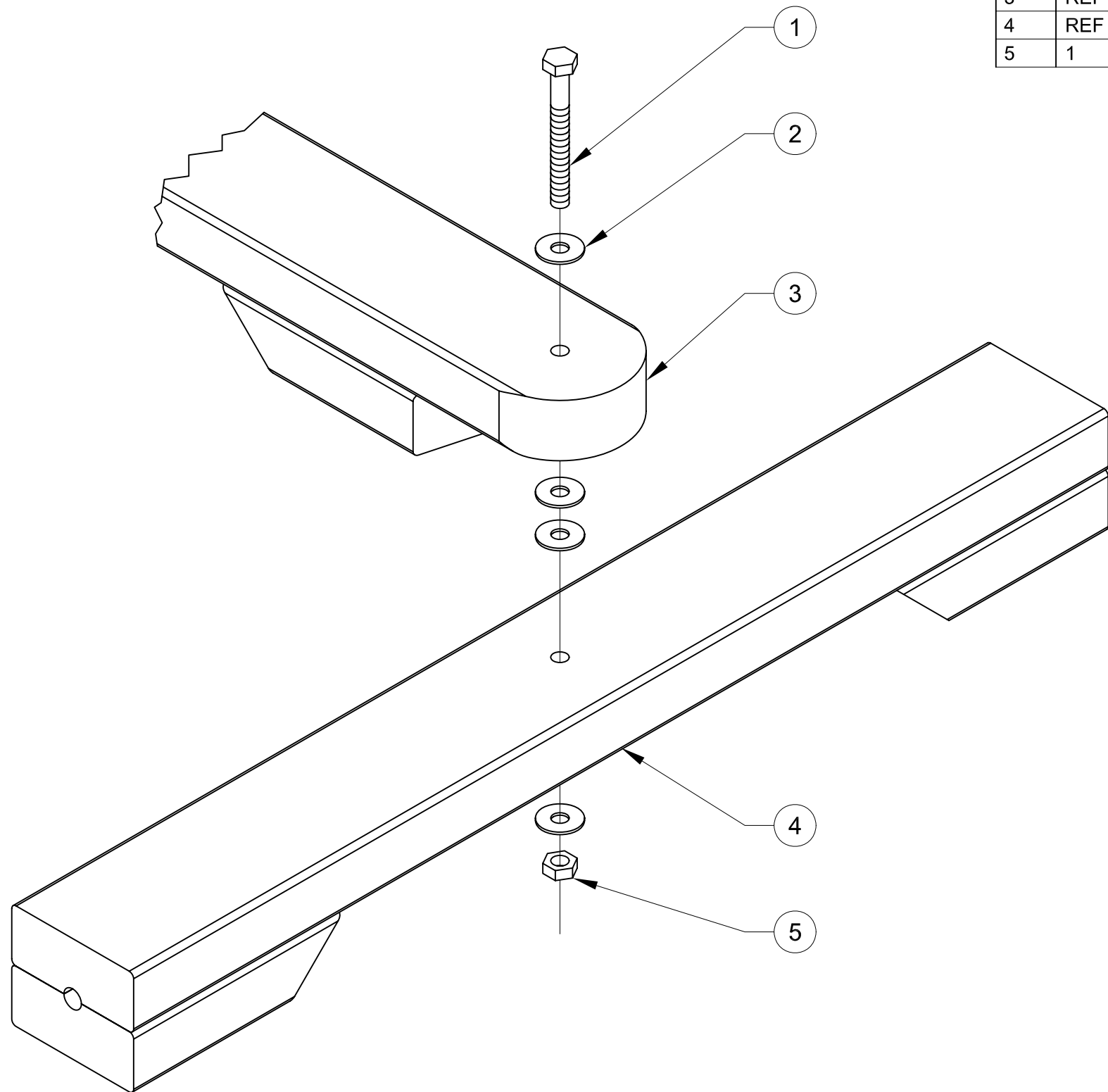
SECTIONED/ASSEMBLED VIEW

A AXEL SHOULD BE SQUARE WITH MAIN FRAME.

THIS DRAWING IS THE PROPERTY THE CUSTOMER. IT SHALL NOT BE COPIED (IN WHOLE OR IN PART), FOR MANUFACTURE OR OTHERWISE DISCLOSED WITHOUT PRIOR WRITTEN CONSENT OF THE CUSTOMER.		TOLERANCES		SCALE: 1:2	TITLE: PACK 409 CUB-MOBILE ASSEMBLY, REAR AXEL	
		MACHINING	FABRICATION	DRAWN BY: MLGATES	SIZE: A	SHEET 1 OF 1
ESTIMATED WEIGHT:	FIRST ORDERED ON:	X.	± .040	ALL	DATE:	DWG NO: AXEL-2
		X.X	± .020	ANGULAR	2°	
		X.XX	± .010	ALL FINISHES	CHECKED BY:	
		X.XXX	± .005	125mu	DATE:	
		ANGULAR	± 1/2°	DEBURR ALL SHARP CORNERS OR EDGES		

AUTOCAD DRAWING: FORM REVISION 09-01-00

ITEM	QTY	DESCRIPTION	WIDTH	LENGTH	UM	PART NUMBER	MATERIAL	TYP
1	1	BOLT, 3/8"		3.5	EA		STEEL	P
2	4	WASHER, FENDER 3/8"			EA		STEEL	P
3	REF	FRAME, MAIN			EA			D
4	REF	AXEL, FRONT			EA			D
5	1	NUT, SELF LOCKING 3/8"			EA		STEEL	P



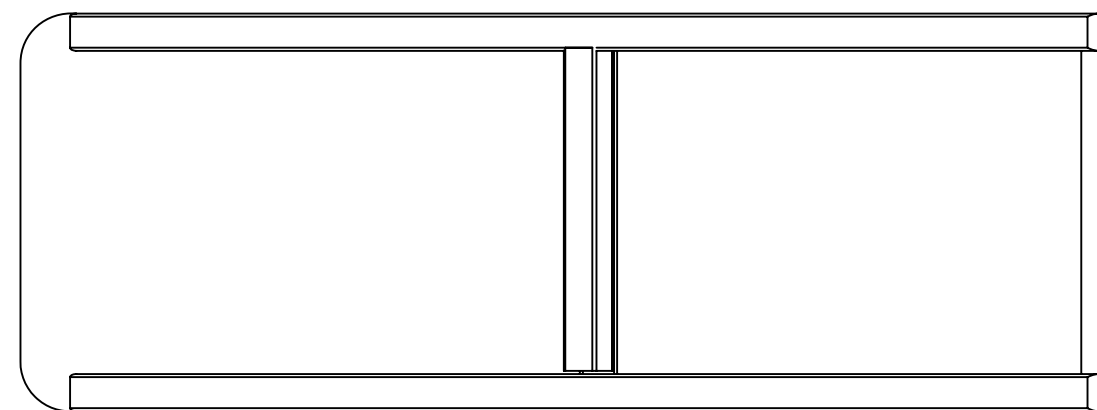
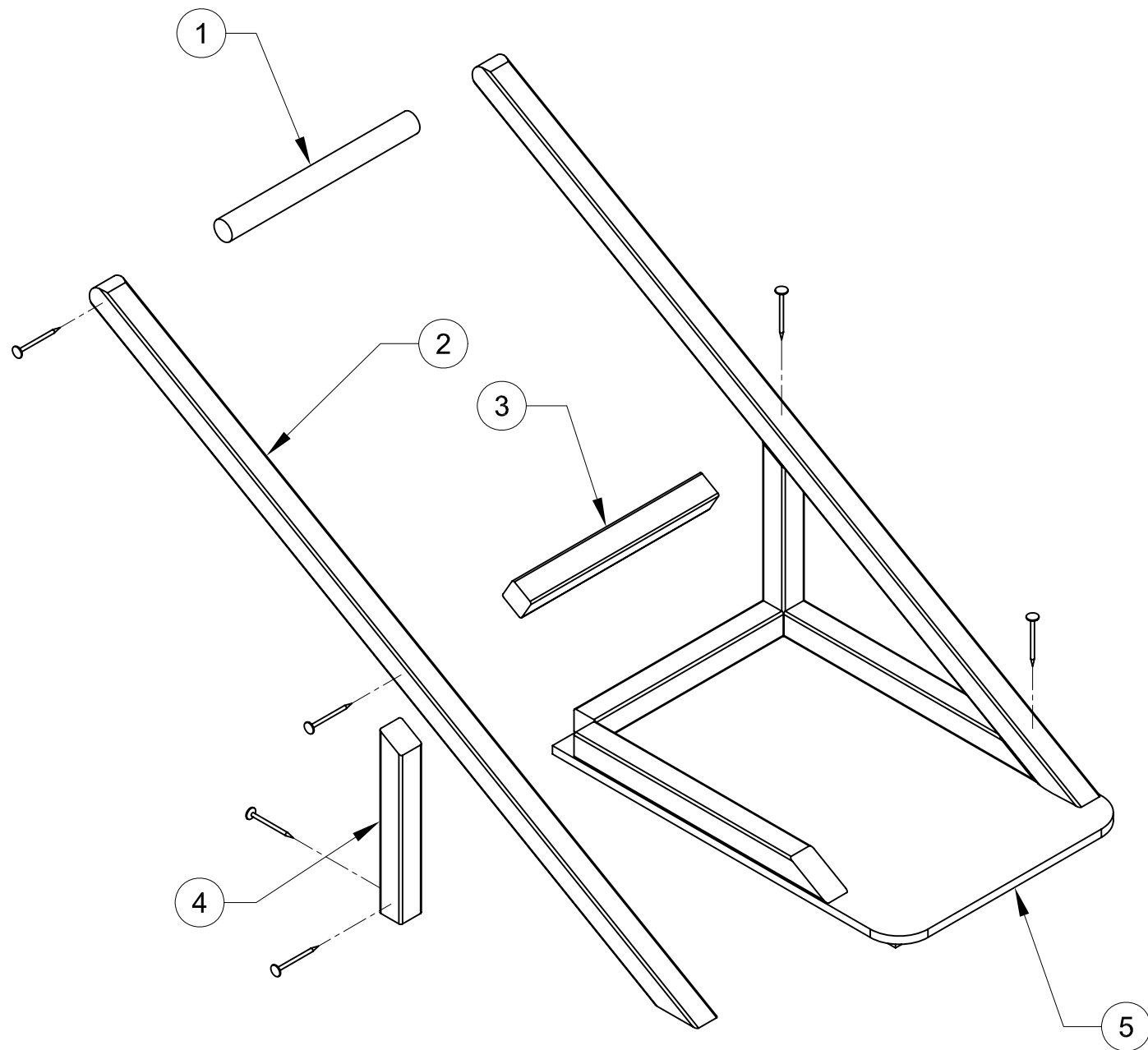
SECTIONED/ASSEMBLED VIEW

A TIGHTEN FRONT AXEL TO SECURE BUT ALLOW IT TO SWING FREELY.

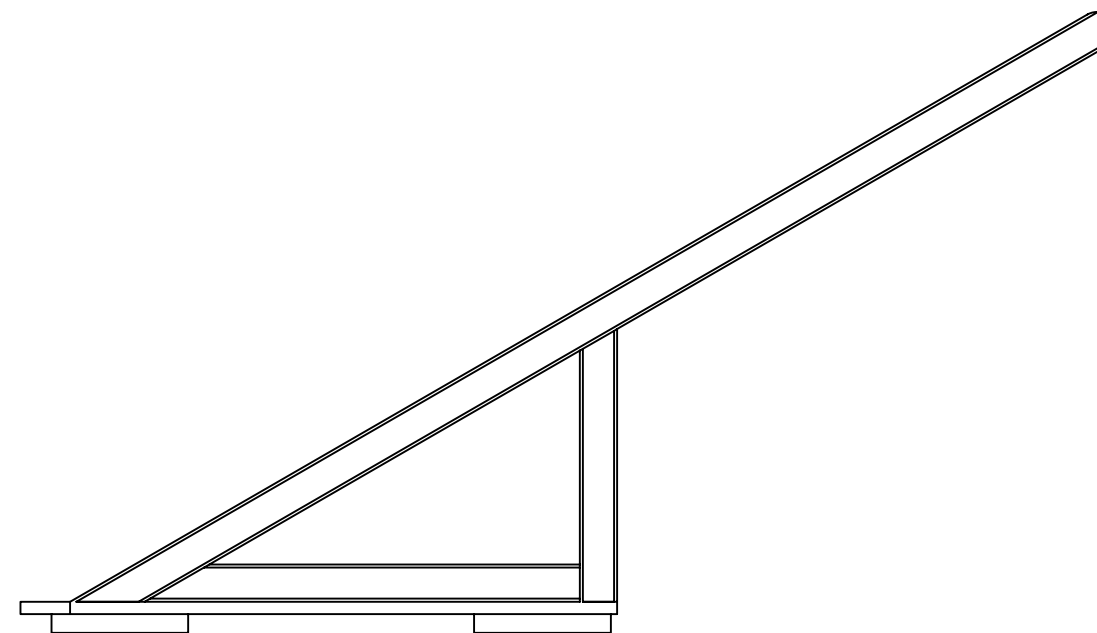
THIS DRAWING IS THE PROPERTY THE CUSTOMER. IT SHALL NOT BE COPIED (IN WHOLE OR IN PART), FOR MANUFACTURE OR OTHERWISE DISCLOSED WITHOUT PRIOR WRITTEN CONSENT OF THE CUSTOMER.		TOLERANCES		SCALE: 1:2	TITLE: PACK 409 CUB-MOBILE ASSEMBLY, FRONT AXEL	
		MACHINING	FABRICATION	DRAWN BY: MGATES		
ESTIMATED WEIGHT:	FIRST ORDERED ON:	X.	± .040	ALL	± .06	DATE: 07JAN08 CHECKED BY: DATE:
		X.X	± .020	ANGULAR	2°	
		X.XX	± .010	ALL FINISHES	125mu	
		X.XXX	± .005	DEBURR ALL SHARP	CORNERS OR EDGES	
		ANGULAR	± 1/2°			SIZE: A SHEET 1 OF 1 DWG NO: AXEL-1

AUTOCAD DRAWING: FORM REVISION 09-01-00

ITEM	QTY	DESCRIPTION	WIDTH	LENGTH	UM	PART NUMBER	MATERIAL	TYP
1	1	BAR, PUSHER			EA			D
2	2	ROLLBAR SIDE BAR			EA			D
3	1	BAR, SUPPORT			EA			D
4	2	SUPPORT, UPRIGHT			EA			D
5	1	BASE, SEAT			EA			D
6	12	DRYWALL SCREW		3.0	EA		STEEL	P



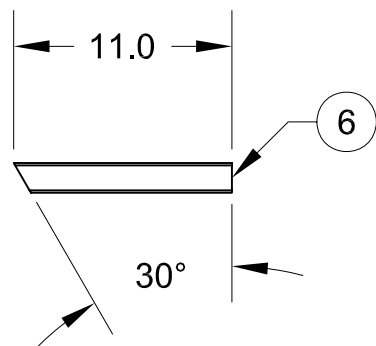
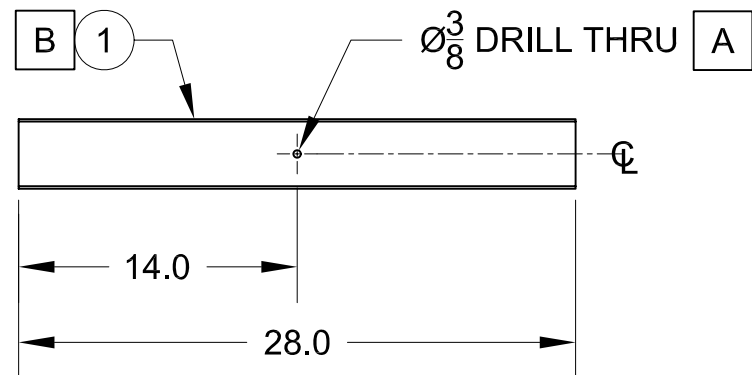
TOP VIEW



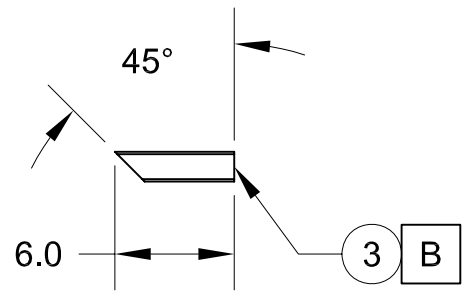
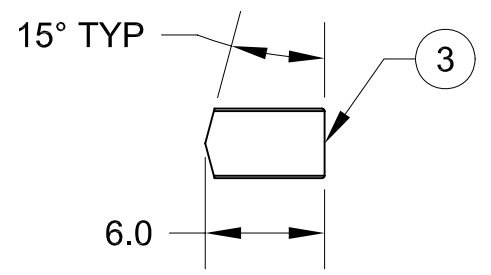
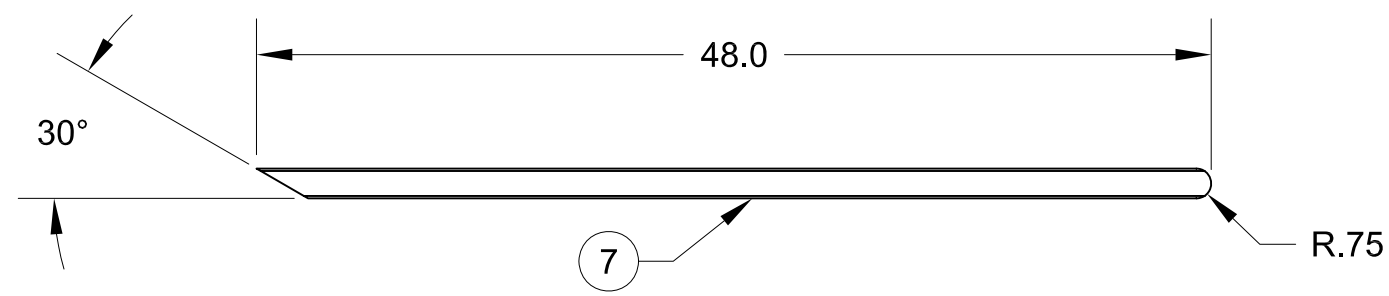
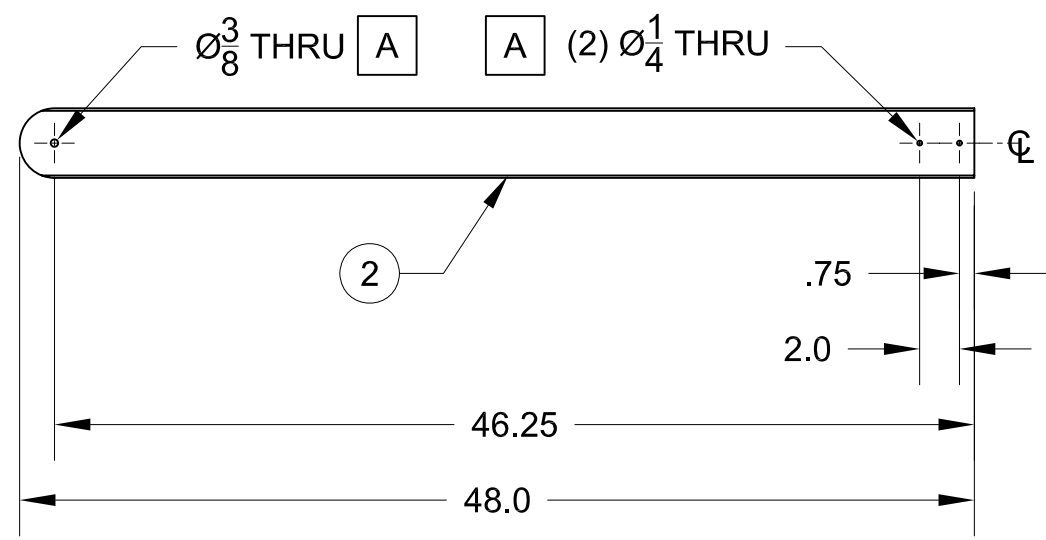
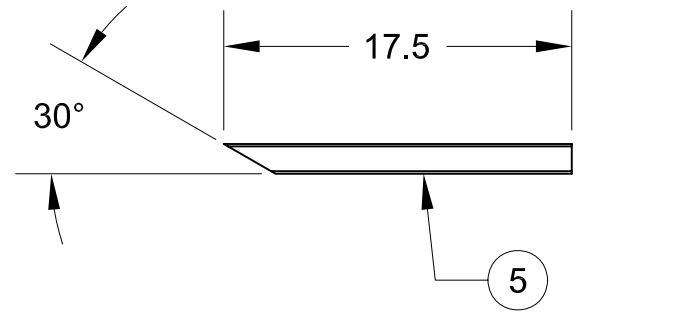
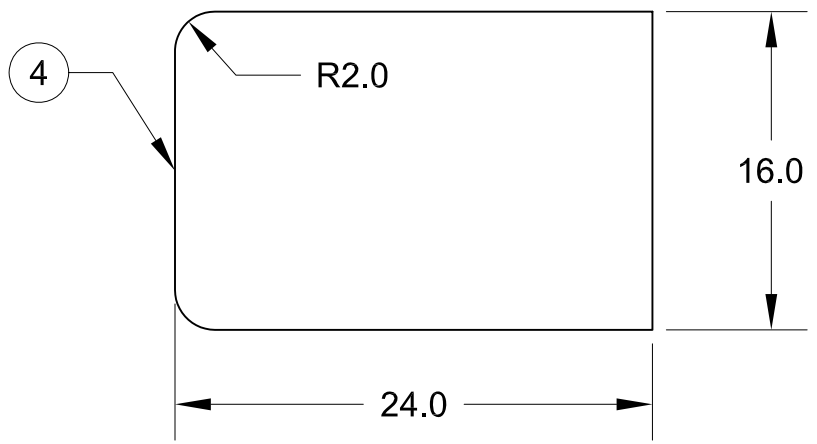
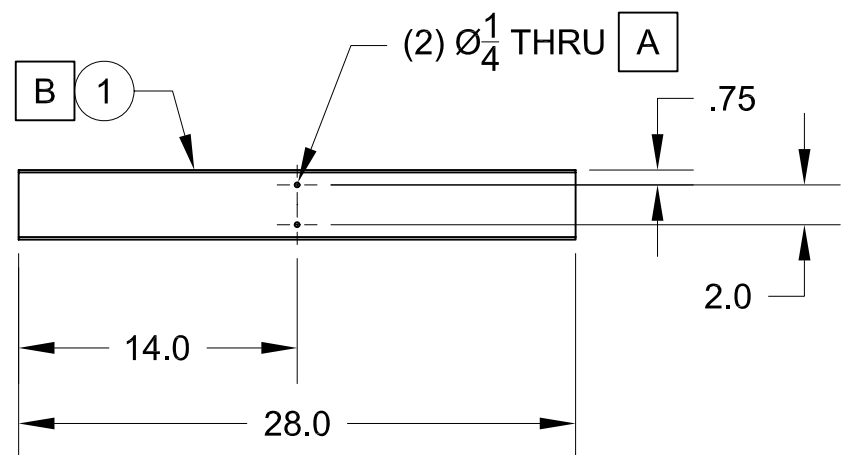
SIDE VIEW

A COCKPIT IS TO BE FASTENED TO FRAME USING DRYWALL SCREWS. POSITION THE COCKPIT SO THAT THE SCOUT WILL BE ABLE TO CONTROL THE FRONT AXEL BY USING HIS FEET.

THIS DRAWING IS THE PROPERTY THE CUSTOMER. IT SHALL NOT BE COPIED (IN WHOLE OR IN PART), FOR MANUFACTURE OR OTHERWISE DISCLOSED WITHOUT PRIOR WRITTEN CONSENT OF THE CUSTOMER.		TOLERANCES		SCALE: 1:2	TITLE: PACK 409 CUB-MOBILE ASSEMBLY, COCKPIT	
		MACHINING	FABRICATION	DRAWN BY: MLGATES		
ESTIMATED WEIGHT:	FIRST ORDERED ON:	X. ±.040	ALL ±.06	DATE: 07JAN08	SIZE: A	SHEET 1 OF 1
		X.X ±.020	ANGULAR 2°	CHECKED BY:	REV	
		X.XX ±.010	ALL FINISHES 125mu	DATE:	DWG NO: COCKPIT-1	
		X.XXX ±.005	DEBURR ALL SHARP			
		ANGULAR ± 1/2°	CORNERS OR EDGES			



ITEM	QTY	DESCRIPTION	WIDTH	LENGTH	UM	PART NUMBER	MATERIAL	TYP
1	2	2" X 4" DIMENSIONAL LUMBER		28.0	EA		WOOD	C
2	1	2" X 4" DIMENSIONAL LUMBER		48.0	EA		WOOD	C
3	5	2" X 4" DIMENSIONAL LUMBER		6.0	EA		WOOD	C
4	1	1/2" PLYWOOD	16.0	24.0	EA		WOOD	C
5	2	2" X 2" DIMENSIONAL LUMBER		17.5	EA		WOOD	C
6	2	2" X 2" DIMENSIONAL LUMBER		11.0	EA		WOOD	C
7	2	2" X 2" DIMENSIONAL LUMBER		48.0	EA		WOOD	C
8	1	2" X 2" DIMENSIONAL LUMBER		13.0	EA		WOOD	C
9	1	1" CLOSET ROD DOWEL		13.0	EA		WOOD	C
10	2	1" X 6" DIMENSIONAL LUMBER		15.0	EA		WOOD	C



- A** HOLE SIZE ARE SHOWN NOMINAL. IT IS RECOMMENDED THAT THESE HOLE BE DRILLED OVERSIZE TO COMPENSATE FOR MANUFACTURING IRREGULARITIES.
- B** IT IS RECCOMENDED TO PRE-ASSEMBLE THE FRONT AND REAR AXELS USING GLUE AND SCREWS. PREDRILL FOR LAGBOLTS.
- C** SAND ALL SURFACES AND ROUND ALL EDGES... SPLINTERS HURT!

THIS DRAWING IS THE PROPERTY THE CUSTOMER. IT SHALL NOT BE COPIED (IN WHOLE OR IN PART), FOR MANUFACTURE OR OTHERWISE DISCLOSED WITHOUT PRIOR WRITTEN CONSENT OF THE CUSTOMER.	TOLERANCES		SCALE: 1:10	TITLE: PACK 409 PROJECT CUB MOBILE	
	MACHINING	FABRICATION	DRAWN BY: MGATES	SIZE: A SHEET 1 OF 1	
ESTIMATED WEIGHT:	FIRST ORDERED ON:	X. ±.040 X.X ±.020 X.XX ±.010 X.XXX ±.005 ANGULAR ± 1/2°	ALL ±.06 ANGULAR 2° ALL FINISHES 125mu DEBURR ALL SHARP CORNERS OR EDGES	DATE:	REV
			CHECKED BY:	DWG NO: COMPONENTS	
			DATE:		

AUTOCAD DRAWING: FORM REVISION 09-01-00